



*indicates standing, if able.
This service is being recorded by video and audio means.

Twenty-third Sunday after Pentecost



~ **We Gather** ~

Welcome

Rev. Matt Nieman

Prelude

Your Love is Extravagant
Sandra Porter Bohlken, soloist

Darrell Evans

CCLI Song # 2612711 by Darrell Evans © 1998 Integrity's Hosanna! Music
For use solely with the SongSelect® Terms of Use. All rights reserved. www.ccli.com. CCLI License # 21071291

*Call to Worship

Blessing and glory and wisdom
and thanksgiving and honor
and power and might
be to our God forever and ever!
With hearts and hands and voices, let us praise the Lord.

*Opening Songs

Take My Life That I May Be
and
For All the Saints

(words and music printed on following pages)

Take My Life That I May Be

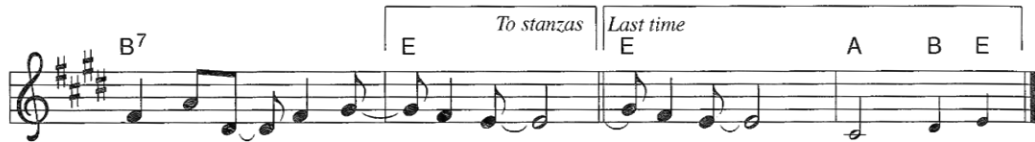
Refrain/Estribillo



To - ma, oh Dios, mi vo - lun - tad, y haz - la tu - ya, na -
 Take my life, that I may be con - se - crat - ed, Lord,



da más; to - ma, sí, mi co - ra - zón
 to thee; take my mo - ments and my days;



y tu tro - no en él ten - drás. ten - drás.
 let them flow in cease - less praise. less praise.



1 Que mi vi - da en - te - ra es - té
 1 Take my hands and let them move
 2 Take my sil - ver and my gold,
 3 Take my voice and let me sing
 4 Take my will and make it thine;



con - sa - gra - da a ti, Se - ñor;
 at the im - pulse of thy love;
 not a mite would I with - hold;
 al - ways, on - ly for my King;
 it shall be no lon - ger mine;



que a mis ma - nos pue - da guiar el im -
 take my feet and let them be swift and
 take my in - tel - lect and use ev - 'ry
 take my lips and let them be filled with
 take my heart, it is thine own; it shall



pul - so de tu a - mor.
 beau - ti - ful for thee.
 pow'r as thou shalt choose.
 mes - sag - es from thee.
 be thy roy - al throne.

For All the Saints

Only Verses 1, 3 and 5



1 For all the saints who from their la - bors rest, who
2 Thou wast their rock, their for - tress, and their might;
3 O blest com - mu - nion, fel - low - ship di - vine!
4 And when the strife is fierce, the war - fare long,
5 From earth's wide bounds, from o - cean's far - thest coast, through



thee by faith be - fore the world con - fessed, thy
thou, Lord, their cap - tain in the well - fought fight;
We fee - bly strug - gle; they in glo - ry shine; yet
steals on the ear the dis - tant tri - umph song, and
gates of pearl streams in the count - less host,



name, O Je - sus, be for - ev - er blest.
thou, in the dark - ness drear, their one true light.
all are one in thee, for all are thine.
hearts are brave a - gain, and arms are strong.
sing - ing to Fa - ther, Son, and Ho - ly Ghost,



Al - le - lu - ia! Al - le - lu - ia!

CCLI Song # 2645678 by William Walsham How - Public Domain
For use solely with the SongSelect® Terms of Use. All rights reserved. www.ccli.com. CCLI License # 21071291

*Prayer of Confession

**Gracious God, you call us your own children and cover us with your love.
We would seek to be merciful as you are, and to show compassion as you do,
but we fail to live the life to which we have been called.
Where we ought to forgive, we condemn;
The evil we should shun, we embrace.**

**Forgive our sinful ways, tame our wayward wills, and make us more like Christ,
until we are raised in perfection on the last day.**

(please continue in silent prayer)

*Declaration of Forgiveness

*The Peace

The Peace of Christ be with you.
And also with you.

~We Proclaim~

Prayer for Illumination

Brett Eiffert

**In your Word, O God, show us heaven. By your Spirit, show us truth;
through Christ, the Living Word, in whom we see your face. Amen.**

Scripture Readings: 1 John 3:1-3
Revelation 7:9-17

Brett Eiffert
Rev. Matt Nieman

The Word of the Lord
Thanks be to God.

Sermon

“Hunger and Thirst No More”

Rev. Matt Nieman

~We Respond~

Remembering the Saints

*Jim Brannon, Elise Gillenwater, Ron Griffith, Tyrone Gregory, Gloria Lay,
Joanna Partain, Larry Roberts, Hazel West, George White*

Musical Reflection

You Say
Musical Ensemble

CCLI Song # 7071357 by Bebo Norman | Jason Ingram | Lauren Daigle | Mike Donehey | Paul Mabury © 2016 Appstreet Music; CentricSongs; See You At The Pub; Fellow Ships Music;
Formerly Music; ICM Crescendo Royalty Publishing; So Essential Tunes
For use solely with the SongSelect® Terms of Use. All rights reserved. www.ccli.com - CCLI License # 21071291.

Moment for Stewardship

Dave and Megan Figel

Call for Giving

~We Remember~

The Invitation to the Lord's Table

Prayers of Thanksgiving and Intercession

The Lord's Prayer

**Our Father, who art in heaven, hallowed be thy name.
Thy kingdom come, thy will be done, on earth as it is in heaven.
Give us this day our daily bread; and forgive us our debts,
as we forgive our debtors; and lead us not into temptation,
but deliver us from evil. For thine is the kingdom, and the power,
and the glory, forever. Amen.**

Words of Institution

The Communion of the People

Reprise of “Your Love is Extravagant”

For use solely with the SongSelect® Terms of Use. All rights reserved. www.ccli.com-CCLI License # 21071291

The Prayer after Communion


~We Go Out Into the World~

*Closing Song

10,000 Reasons (Bless the Lord)


Chorus

C G D/F# Em



Bless the Lord, O my soul, O _____ my soul;


3 C G D^{sus} D C Em



Wor-ship His ho - ly name. — Sing like nev - er be-fore,

2nd time to Coda ⊕

6 C D Em C D C/G G



O my soul; I'll wor-ship Your ho - ly name. —

Verse 1

The sun comes up it's a new day dawning
It's time to sing Your song again
Whatever may pass and whatever lies before me
Let me be singing when the evening comes

Verse 2

You're rich in love and You're slow to anger
Your name is great and Your heart is kind
For all Your goodness I will keep on singing
Ten thousand reasons for my heart to find

Verse 3

And on that day when my strength is failing
The end draws near and my time has come
Still my soul will sing Your praise unending
Ten thousand years and then forevermore

CCLI Song # 6016351 by Jonas Myrin | Matt Redman © 2011 Atlas Mountain Songs (Admin. by Capitol CMG Publishing) sixsteps Music (Admin. by Capitol CMG Publishing) Thankyou Music (Admin. by Capitol CMG Publishing) worshiptogether.com songs (Admin. by Capitol CMG Publishing) For use solely with the SongSelect® [Terms of Use](#). All rights reserved. www.ccli.com - CCLI License # 21071291

*Charge and Benediction

Special thanks to today's Music Ensemble:

Sandra Bohlken, guitar and vocals ~ Tim Mashue, bass guitar ~ Kevin Zetina, percussion
LisaKay Matchen and Bruce Wilson, vocals

If you would like the church office to record your attendance today, you can:



Scan this QR code and click on the generated google doc link, or

- Go to <https://tinyurl.com/record-FPC-attendance>, or
- Email the office at office@fpctn.org, or
- Sign the pew attendance pad.



Join us for a musical treat today at 3pm in the sanctuary as the UT Women's Chorale have their Fall Recital!

Consecration Sunday is coming:
NOVEMBER 12TH
 One Worship Service at 10am,
 followed by a Thanksgiving Dinner at 11am
 in Fellowship Hall.



Please RSVP at: <https://tinyurl.com/ConsecrationMeal>



Worship & Music is transitioning the All Saints' display starting this year by displaying only those members of our church family who have died in the previous year. Photos used in prior years are in the narthex. If you have a photo of a loved one displayed in the narthex, we invite you to take it home with you. They will be available to pick up through Wednesday, should you forget to take it with you today.
Thank you!

SHEPHERD OF HOPE FOOD PANTRY: We have been asked to provide specific items for holiday meals in November and December for food pantry families. We'll be collecting boxes/bags of stuffing mix, cake mixes, and ready-to-use cans of frosting. In total for the two months, we figure we'll need 400 of each item. You can place your donations in the Shepherd of Hope shopping cart in the narthex. Thank you for your continued support of this special outreach to our community.



OCTOBER TRIP TO CAM: Thanks to everyone who donated two carloads of craft supplies and helped deliver them to the Coalition of Appalachian Ministry (CAM) Cabin in Townsend last week. The donations are given to the less fortunate who make wonderful crafts and sell them at the store. Lunch at Elvira's Restaurant in Wear's Valley was enjoyed by all who participated. Pictured here are volunteers: Margo Gregory, Debbie Long, Sandi Keagy, Janet Tinder, Mikie Lancaster, Chris Sparks, Terry Olberding and Elizabeth Wilson.

Coats for the Cold is an annual coat drive sponsored by Knox Area Rescue Mission (KARM) to collect thousands of coats for those in our area who otherwise may not have a coat during the quickly approaching winter months. Our FPC Congregation along with the Knoxville community is invited to donate new and gently-used men's, women's and children's coats to any KARM Stores or Prestige Cleaners location any time between October 16 to November 11. "I needed clothes and you clothed me... whatever you did for one of the least of these brothers and sisters of mine, you did for me." ~Matthew 25:36 & 40





Our special thanks to Gayle Williams, Miki Vanderbilt and October coordinators Terry and Robert Olberding for preparing a meal for the hungry at **Volunteer Ministry Center** in downtown Knoxville last month. They worked with a group of local youth in serving the meal. If you would like to help in this wonderful outreach program, contact November coordinators, Joyce and Kent Williams, to participate in the November meal on Tuesday the 21st or sign up in the narthex.



One of the many wonderful things we always enjoy during the Advent and Christmas season is the music that enhances our celebration. On Sunday, November 19 at 3:00 p.m. we are very excited to present our **Annual Christmas Festival!** This year our own Chancel Choir will partner with the Chamber Singers of the University of Tennessee to present wonderful music of the season. You won't want to miss this exciting event that always fills our chancel with the glorious sounds of the season.

Sunset Gap Mitten Tree

The congregation is invited to join Presbyterian Women in collecting hats, scarves, mittens and gloves for the mitten tree which is available to the community Nov-Feb for anyone who needs these warm items. Items may be new or handmade. A bin is in the narthex for your donations. Deadline is Dec 3. Questions? Contact Debbie Long.



Sunset Gap Secret Santa

Look for the signup sheets both on-site in the narthex and on-line at <https://tinyurl.com/SunsetGapChristmasFor2023> (or use the QR code) for the 40 children that we are sponsoring this Christmas. Select a tag, sign up on the sheet with both your name and phone number. Be sure to note your tag's number. Please return wrapped for Christmas, with the child's name and tag number on the package by Dec 3rd. Questions? Please contact Debbie Long.



PRAYERS FOR OUR CHURCH FAMILY:

Candice Blake, Bob Bowman, Lois Burris, Kathy Emmerson, Frank Guess, Paul Hanson, Jimmy and Beth Loyless, Irma McGuffey, Tami Newsom, Betsy Starr, Steve Tinder, Helen Weaver, Kent Williams

This Week at FPC

Sun, Nov 05	9:00 a.m. Casual and 11:00 Traditional Worship Services		
Mon, Nov 06	9:00	a.m.	KidZone/Fellowship Hall
	10:00	a.m.	Growing Families Small Group/Room A
	3:00	p.m.	UT Women's Chorale Fall Recital /Sanctuary
	5:30	p.m.	Stewardship/Staff Dinner/Concord Yacht Club
	6:00	p.m.	Youth Group/Parlor
Tues, Nov 07	10:00	a.m.	Chair Yoga/Narthex
	11:45	a.m.	Big Fish Music/Room A
	6:00	p.m.	FPC/UT Joint Choir Rehearsal, Sanc, Rm A, Narthex
Wed, Nov 08	6:00	p.m.	STEM Scouts/Fellowship Hall
	11:45	a.m.	Big Fish Chapel/Sanctuary
	5:30	p.m.	Outreach Committee/Library
Thur, Nov 09	6:30	p.m.	Early-Onset Dementia Caregivers/Room A
	7:00	p.m.	Boy Scout Troop #444 /FH, Narthex
Fri, Nov 10	10:00	a.m.	PW Circle #3/Library
	11:45	a.m.	Big Fish Chapel/Room A
Sat, Nov 11	7:30	p.m.	Chancel Choir Rehearsal/Room A
	11:45	a.m.	Big Fish Music/Room A
	6:30	p.m.	Cub Scouts/Fellowship Hall
	7:00	p.m.	Thursday Night Bible Study/Zoom
	10:00	a.m.	Chair Yoga/Narthex
	7:00	p.m.	Gentle Yoga Class/Narthex
	*****	*****	Birthday Party/FH Reserved

Sunday School 10:00 a.m.

Class	Room	Topic
Adult Bible Study	Outside or in Room D in bad weather	This class discusses the Lectionary text from the sermon, and still meets under the trees in good weather and in Room D in not-so-good weather.
Pastor Matt's Class	Library	Come join this Bible study group led by Pastor Matt and others at 10:00 in the Library.
Youth	Café (Parlor)	The youth Sunday School class meets to "DIVE IN to the Old Testament!" Each week throughout the school year, youth explore a specific book of the Old Testament utilizing videos and discussion.



FARRAGUT PRESBYTERIAN CHURCH

209 Jamestowne Blvd., Farragut, TN 37934

Phone: 865/966-9547

Email: office@fpcn.org ~ Website: www.fpcn.org

Office Hours:

Monday – Thursday: 9am to 3pm ~ Friday: 9am to 1pm



To praise God, welcome all, serve others, grow in faith, and make disciples of Jesus Christ.